

MAKING ROUNDS

BOCA RATON REGIONAL HOSPITAL

M9K: 0008 # 839 WINTER 2014



TAKING CARE
OF THE MOST
SOPHISTICATED
COMPUTER
EVER DESIGNED

PAGE 10

NEW TECHNOLOGY FOR
DETECTING BREAST CANCER

PAGE 3



Letter from the President

JERRY J. FEDELE

With the opening of Boca Raton Regional Hospital's new Marcus Neuroscience Institute just a few months away, this edition of *Making Rounds* takes another look at how the Institute will change the landscape of care for neurological and neurosurgical patients in South Florida.

We give you a closer look at internationally acclaimed neurosurgeon Robert Levy, MD, PhD, who was appointed as Director of the Marcus Neuroscience Institute. Dr. Levy is leading a team that will develop a program that offers a combination of technology, clinical skill and programmatic services unequaled in the region. We remain indebted to Bernie and Billi Marcus and the Marcus Foundation for their lead \$25 million gift, and to the other noted philanthropists whose overwhelming generosity has made this all possible.

You will read about a host of other exciting developments at Boca Regional that reflect our growing vibrancy such as our pioneering efforts in molecular breast imaging, which provides a more definitive diagnostic tool for women with dense breasts

who run a higher risk for breast cancer. You'll see how the Hospital is among the nation's leaders in patient safety and the first in Palm Beach County to use drug-eluting stents in the treatment of peripheral artery disease. You will learn about Boca Raton Regional Hospital's evolution into an academic medical center and our new and exciting affiliation with North Shore-LIJ Health System.

This edition also notes the prestigious designations Boca Regional continues to earn for its quality of care, placing us in the highest echelon of hospitals nationwide.

From any perspective, these are very exciting times at Boca Raton Regional Hospital. As I'm sure you will see in the pages ahead, we truly are advancing the boundaries of medicine in South Florida...and beyond.

Jerry J. Fedele
President & CEO



For additional information or a complete list of Boca Raton Regional Hospital's awards and accolades, visit BRRH.com

New Technology Detects Cancer in Dense Breasts

Boca Raton Regional Hospital has now added GE Healthcare's new molecular breast imaging (MBI) technology to its spectrum of capabilities in the detection and diagnosis of breast cancer.

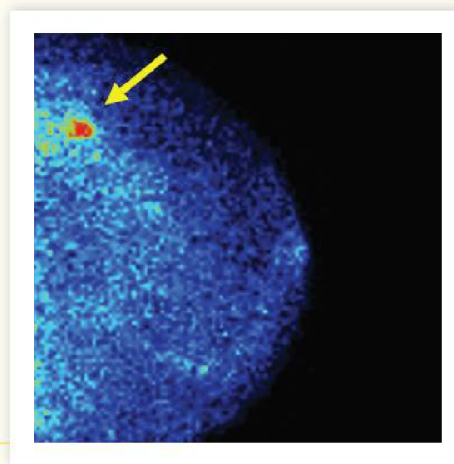
The Discovery NM750b system enables high sensitivity imaging to detect breast cancer in patients considered to be at high risk. The technology is also especially useful for patients who are unable to undergo magnetic resonance imaging (MRI) exams or those with breast implants, where mammography is limited.

"While routine mammography remains the gold standard for the detection of early breast cancers, the sensitivity of mammography in women with extremely dense breast tissue has been reported to be less than 50 percent," said Kathy Schilling, MD,

Medical Director of Boca Regional's Christine E. Lynn Women's Health & Wellness Institute. "Making matters worse is the fact that dense breast tissue is an independent risk factor for breast cancer so we have a population of women with a greater number of breast cancers that are harder to find."

Approximately 40 percent of all women have dense breasts, which contain more glandular tissue than fat, making accurate imaging with conventional techniques more difficult.

The Discovery NM750b requires 30 percent less tissue compression than mammography, takes clearer diagnostic images and allows for its detectors to scan closer to the patient. The result is an improvement in imaging sensitivity compared to more traditional technology.



According to Dr. Schilling, tomosynthesis (3D mammography), breast ultrasound and MRI have been utilized as adjunct imaging strategies for breast cancer detection. While these modalities, particularly MRI, result in increased sensitivity, they also lead to a significant increase in false-positive scans, prompting a large number of unnecessary biopsies and interventions.

Recent data reveal that MBI realizes a 64 percent increase in the detection of cancerous breast lesions when compared to the use of mammography alone. It exceeds that of tomosynthesis by 11 percent, ultrasound by 29 percent and MRI by 56 percent.



For more information on Molecular Breast Imaging, call 561.955.4913



GRADED
FOR PATIENT SAFETY

"A-Graded" Back-to-Back

HOSPITAL IN TOP ONE-THIRD OF INSTITUTIONS NATIONALLY

Boca Regional is the recipient of an "A" grade in the latest Hospital Safety ScoreSM ratings administered by The Leapfrog Group, an independent, national nonprofit organization focused on healthcare safety and accountability. These reports are issued on a biannual basis and Boca Regional has now received an "A" grade for two consecutive periods. The Hospital Safety Score uses 26 measures of publicly available hospital safety data representing a hospital's overall success in keeping patients safe from infections, injuries and medical and medication errors.

MR



A New Affiliation

BOCA RATON REGIONAL HOSPITAL
AND NORTH SHORE-LIJ HEALTH SYSTEM
COLLABORATE TO IMPROVE PATIENT CARE

Boca Raton Regional Hospital and North Shore-LIJ Health System have entered into an affiliation agreement aimed at creating synergistic opportunities in such areas as patient care, clinical program development and research and education in the health sciences. The agreement has an initial three-year term.

North Shore-LIJ Health System is the largest integrated healthcare network in the state of New York and one of the nation's largest healthcare systems, with net annual revenue of more than \$7 billion. The health system has 16 member hospitals and nearly 400 ambulatory physician practices throughout the New York metropolitan area, affiliations with more than 9,400 physicians and a total workforce of more than 47,000.

"This is a very exciting and important development for Boca Raton Regional Hospital," said Jerry Fedele, President and CEO. "We are thrilled to establish a mutually beneficial relationship with one of the most accomplished health systems in the country."

This unique agreement between independent healthcare systems operating in different states provides substantial value to the respective hospitals, affiliated physicians and patients in both New York and Florida.

"Our affiliation will permit both

organizations to collaborate and share best practices to better meet the healthcare needs of the populations we serve, including many patients who live in the New York area and spend the winter months in Palm Beach and Broward counties," said Michael J. Dowling, North Shore-LIJ's President and CEO. "Establishing this new relationship will lead to better continuity of care for patients who rely on both providers for their care. From the continuity and quality of care perspective alone, we had an excellent foundation for establishing a relationship."

Both Fedele and Dowling stated that discussions between the organizations identified a number of opportunities for additional collaboration.

"While our preliminary talks were rooted in continuity of care, we soon discovered a joint desire to explore ways that we could learn from each other," said Fedele. "The depth and experience of a system such as North Shore-LIJ certainly presents outstanding advantages to us and will be important as healthcare migrates to new paradigms of care."

Dowling stressed that the quality of programs and services at Boca Regional was also a determining factor for North Shore-LIJ to structure the

affiliation. "It was essential for us to partner with an organization that shares our level of commitment to patient care. By any metric, be it patient safety, quality of care or national accolades for clinical excellence, Boca Regional is exceptional," he said. "When you couple that with its programmatic vibrancy and its regional leadership in such areas as heart and cancer care, women's health and now the neurosciences, this is a hospital that we can recommend to our patients with great confidence and enthusiasm."

Fedele emphasized that the affiliation with North Shore-LIJ was indicative of Boca Regional's ongoing efforts to not only respond to industry challenges, but also to strengthen itself through creative relationships. The Hospital's Board of Trustees recently completed a strategic planning process that called for Boca Regional to remain an independent, not-for-profit hospital while seeking partnerships that would strengthen its ability to thrive and provide the best care for its patients in an evolving healthcare environment.

According to the affiliation agreement, both Boca Raton Regional Hospital and North Shore-LIJ will maintain their respective corporate independence and local autonomy.



Helping Kids and Families Cope with Cancer

THE FIRST IN FLORIDA TO INTRODUCE
THE CLIMB® PROGRAM

Boca Raton Regional Hospital was the first cancer program in the state of Florida to offer the Children's Lives Include Moments of Bravery (CLIMB®) Program to children of cancer patients. Developed by the Children's Treehouse Foundation®, a non-profit organization dedicated to the emotional support of children who have parents with cancer, the CLIMB Program helps youngsters cope and share their feelings of concern during this stressful time in their lives.

CLIMB will be offered to children ages six to 17 and will meet once per week for four weeks. Under the direction of a specially trained clinical social worker, the sessions use discussion and art to help participants express their feelings. Children are provided with their own workbook, which they can share with family members. There is no charge for the program.

CLIMB has been implemented at some of the nation's leading cancer centers such as MD Anderson Cancer Center and

Memorial Sloan-Kettering Cancer Center™ where the program has demonstrated a significant, positive impact on these children.

Benefits include improved communication between the parent and child and teaching children that their parent's cancer is "not their fault" and that they are not alone.

CLIMB is a component of the Institute's broader HUGS (Helping U Get Support) Program, a comprehensive effort to support children and teens. Both are part of the umbrella CINDY Bertuch Rosencrans Life Expressions Program, which was founded at the Institute and provides emotional, personal, educational and logistical support for a patient and their family at all phases of diagnosis and treatment, with an emphasis on supporting the end-of-life process.



For more information or to enroll a child in the CLIMB program, call 561.955.5265.

Hospital Receives Stroke Achievement Award

TWO YEARS IN A ROW



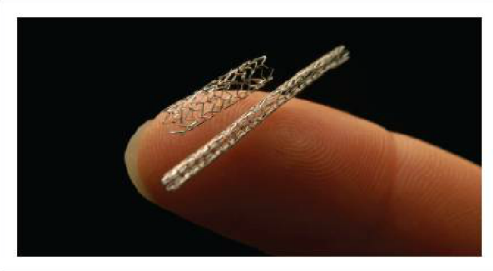
Boca Raton Regional Hospital has again received the American Heart Association/American Stroke Association's Get With The Guidelines® – Stroke Silver Plus Quality Achievement Award. The

award recognizes the Hospital's commitment and success in implementing a higher level of stroke care by ensuring that stroke patients receive treatment according to nationally accepted standards and recommendations. This represents the second year in a row that the Hospital has been so honored.

To receive the Award, Boca Regional achieved at least 12 consecutive months of 85 percent or higher adherence to all Get With The Guidelines-Stroke Quality Achievement indicators and achieved at least 75 percent or higher compliance with six of 10 Get With The Guidelines-Stroke Quality Measures during that same period of time.

"With a stroke, time is essential and the Quality Achievement Award demonstrates that our staff is committed to providing care that has been shown in the scientific literature to quickly and efficiently treat stroke patients with evidence-based protocols," said Douglas DeOrchis, MD, Interventional Radiologist at Boca Raton Regional Hospital.

Get With The Guidelines-Stroke uses the "teachable moment," the time soon after a patient has had a stroke, when they are most likely to listen to and follow their healthcare professionals' guidance. Studies demonstrate that patients who are taught how to manage their risk factors while still in the hospital reduce their risk of a second event. Customized patient education materials are made available at the point of discharge, based on patients' individual risk profiles.



First in County to Use Drug-Eluting Stents to Treat PAD

Boca Raton Regional Hospital has earned distinction as the first hospital in Palm Beach County to employ the first FDA-approved drug-eluting stent in the treatment of patients with peripheral artery disease (PAD) in the superficial femoral artery. Vascular surgeons at the Hospital began utilizing the technique in September 2013. PAD is a chronic, progressive circulatory disease, in which plaque builds up in the arteries that feed blood to the head, organs and limbs.

"With this device, we will begin to revolutionize the management of peripheral artery disease that mirrors the advances realized when drug-eluting stents were introduced in treating coronary artery disease," said W. Anthony Lee, MD, Director of the Endovascular Program at Boca Regional's Christine E. Lynn Heart & Vascular Institute. "We believe this approach will become the standard of care for patients with PAD and give our patients a distinct advantage."

Clinical trial data reveal that eight out of 10 patients treated with the device had open arteries one year after the procedure as compared to only three out of 10 that underwent conventional angioplasty. Moreover, patients who received bare metal stents required more than twice as many reinterventions to reopen the artery as patients who received the drug-eluting stent.

Boca Regional Makes Transformation

NEW INTERNAL MEDICINE RESIDENCY PROGRAM

In yet another important milestone in the continuing evolution of Boca Raton Regional Hospital, the Charles E. Schmidt College of Medicine at Florida Atlantic University has designated the Hospital as its primary teaching site for its residency program in internal medicine. This summer, 36 residents will begin their post-graduate medical education at the Hospital. Boca Regional will serve in a similar capacity for the College's planned general surgery residency program.

According to Charles Posternack, MD, Chief Medical Officer at Boca Regional, providing graduate medical education on a local level offers significant benefits to the Hospital, its patients and the community at large.

"By its very nature, graduate medical education enhances the way we deliver care," commented Dr. Posternack. "Our residents, who have already earned their medical degree, will question and

sometimes even challenge the opinions of our teaching faculty. That clinical dialogue, as opposed to a monologue, adds depth and substance to our approach to treatment."

Another important attribute is the fact that a residency provided locally helps to increase the number of clinicians who practice in the region. Studies have shown that an overwhelming majority of graduate medical students opt to practice within 20 miles of where they completed their residency. Given that South Florida suffers from a dearth of residency programs, the internal medicine residency program at Boca Regional will serve to add to the number of doctors who practice locally.

"Providing graduate medical education at Boca Regional will help us retain the best and brightest new clinicians for service in our community," said Dr. Posternack.



Gifts from the Community

MADE THE MARCUS NEUROSCIENCE INSTITUTE A REALITY

Thank you to our very generous and compassionate donors, whose significant contributions to the Marcus Neuroscience Institute have helped to create a state-of-the-art nexus for neurological care in South Florida. Their gifts, and every gift to Boca Raton Regional Hospital, enable us to save lives each and every day, as we bring world-class healthcare to our community.

MARCUS NEUROSCIENCE INSTITUTE

Marcus Foundation – Billi & Bernie Marcus

SCHMIDT FAMILY PAVILION

Schmidt Family Foundation – Barbara & Dick Schmidt

TOBY & LEON COOPERMAN CENTER FOR MEMORY DISORDERS AND ALZHEIMER'S DISEASE

Toby & Leon Cooperman

HARVEY SANDLER CENTER FOR NEUROSURGERY

Harvey & Phyllis Sandler Foundation – Phyllis & Harvey Sandler

HERBERT & ANN D. FISHER FAMILY fMRI TREATMENT ROOM

Herbert & Ann D. Fisher Family

HARRIETT & HARVEY POLLY RECEPTION – FIRST FLOOR

Sheltering Palms Foundation – Harriett & Harvey Polly

PHILLIP & PEGGY DeZWIREK LOBBY – FIRST FLOOR

Peggy & Phillip DeZwirek

FIRST FLOOR ELEVATOR LOBBY

Kessler Family Foundation – Jennifer & Brian Kessler

ELEVATOR

Barbara D. & Arnold L. Cohen

NEUROINTENSIVE CARE ROOMS

Phyllis & Gerald Golden
Mildred & Bernard H. Kayden

WAITING AREA – FIRST FLOOR

In Loving Memory of Robert & Odette Kane by Ena Kane

SECOND FLOOR ELEVATOR LOBBY

Shirley & Howard Swidler

ELEVATOR

Lois & Robert Pergament

The Marks Foundation, in loving memory of Paul J. Marks
Etolie Volin, in memory of Robert Volin

GEORGE & DR. LAURA MARDYKS FAMILY CONSULTATION ROOM

George & Dr. Laura Mardyks

FIRST FLOOR EXAM ROOM

Susan & Richard Frisina

NURSING OFFICE

Rona & Mel Roth

SOCIAL SERVICES OFFICE

Carol & Walter Eisenberg

FAMILY AREA IN NEURO ICU ROOMS

Sharon & Edward C. Cohen
Carolyn & Edwin Levy
Shirley & Robert E. Davis
Donald & Sylvia Robinson Family Foundation

The Phyllis L. & Leonard J. Attman Foundation, Inc.
Joan & Jerold Glassman
Molly Foreman Kozel, in loving memory of Bernard Kozel
The Richard L. & Lois S. Werner Family Foundation



For information on additional opportunities to support your Hospital, please call the Boca Regional Foundation at 561.955.4142

Lynn Cancer Institute Joins Moffitt Oncology Network

PARTNERSHIP PART OF DEVELOPMENT OF PREMIER CANCER CARE DELIVERY SYSTEM

The Eugene M. & Christine E. Lynn Cancer Institute has joined the newly launched Moffitt Oncology Network. With the inclusion of the Lynn Cancer Institute, the network adds an accomplished and well-respected cancer program that shares in the commitment to developing a premier cancer care delivery system.

The partnership presents key elements that will enhance the Institute's capabilities, said Louise Morrell, MD, Medical Director of the Lynn Cancer Institute. "As a member of the Moffitt Oncology Network, we have expanded opportunities for joint clinical research, the development of unique patient-care programs, access and use of Moffitt Clinical Pathways and the development of strategic centers of excellence, with a focus on the needs of the senior adult population with cancer," she said.

The Institute's physicians will be credentialed as members of Moffitt faculty and collaborate with Moffitt clinicians on patient care and research.

As the only National Cancer Institute (NCI)-designated Comprehensive Cancer Center based in Florida, Moffitt is part of an elite group of programs that represent the strongest institutions in the nation dedicated to scientific innovation and excellence, interdisciplinary research, training and education, recognition and the pursuit of new research opportunities.

The Lynn Cancer Institute brings its own outstanding credentials to the network. As one of the largest cancer programs by patient volume in Florida, the Institute is accredited by the American College of Surgeons Commission on Cancer and was named in 2013 by *Becker's Hospital Review* as

one of the nation's 100 Hospitals and Health Systems with Great Oncology Programs. Its 98,000 square-foot Harvey & Phyllis Sandler Pavilion houses imaging, radiation, chemotherapy and cancer support services, as well as its clinical research initiatives.

Through this new relationship, the Lynn Cancer Institute and Moffitt will collaborate on unique clinical trials, evidence-based clinical care and educational programs that will provide oversight, measurement and feedback for the Institute. As the importance of quality grows in healthcare reform, this partnership will better position both organizations to provide the best care in a changing environment.



For more information about the Moffitt Oncology Network, visit www.moffitt.org

Boca Regional Board Chair Receives National Honor

CHRISTINE E. LYNN SELECTED AS AN ELLIS ISLAND MEDAL OF HONOR AWARDEE



Christine E. Lynn, philanthropist and Board Chair at Boca Regional, was selected by the National Ethnic Coalition of Organizations (NECO) as an Ellis Island Medal of Honor awardee. The honor is bestowed each year to 100 individuals who have distinguished themselves within their own ethnic group while exemplifying the values of the American way of life.

Past medalists include six U.S. Presidents, Nobel Prize winners and leaders of industry, education, the

arts and sports, as well as everyday Americans who make freedom, liberty and compassion part of their life's work.

Ms. Lynn was trained as a registered nurse in Oslo, Norway. She married Eugene Lynn in 1980 and became a resident of Boca Raton. In 2008, *Boca Raton Magazine* called her a "Hometown Hero" for outstanding generosity and love for her community. She exemplifies not only the kind of individuals we have as board members, but also the caliber of people who live in Boca Raton.

Implantable Cardiac Devices

NOW MONITORED REMOTELY

Boca Raton Regional Hospital is the first hospital in Florida to use a new technology that allows for monitoring of implantable cardiac devices from remote locations. This capability will provide better service to device patients by giving them faster access to care, improve patient flow at Boca Regional and decrease costs that result from delays that occur while waiting for device checks to be completed.

Today, more than three million Americans have implantable cardiac devices such as pacemakers, implantable defibrillators or implantable cardiac monitors. These technologies require monitoring, and in some cases adjustments, to ensure optimum performance or to respond to a change in a patient's clinical status.

Prior to the CareLink Express® Service, patients had to wait to have their devices checked in person by a Medtronic technical expert during an Emergency Department visit or prior to a surgical procedure, regardless of the reason for their hospital stay.

According to E. Martin Kloosterman, MD, Chief of Cardiology at Boca Regional, the Medtronic CareLink Express Service provides a dramatic decrease in wait times for these patients. "We've seen an average reduction in wait times from a previous average of about 80 minutes to less than 15," he said. "It's obviously a great satisfier from both a patient and physician perspective."



At the core of the new process is the CareLink Express monitor, which is compatible with Medtronic implantable devices. The one-touch monitor is used to check or "interrogate" the respective device. When a patient arrives at Boca Regional, staff use the monitor to check the implanted device and transmit its data to the CareLink® Network. Once transmitted, a device expert receives an automatic page or email indicating that new information is available.

The device expert then reviews the data from the remote location and provides an assessment of the device status back to Boca Regional. Based on the analysis, clinicians determine the appropriate treatment for the patient.

"This new technology makes us much more efficient in the care we provide," said Terry Cohen, MD, Medical Director of the Wold Family Center for Emergency Medicine at Boca Regional. "It helps us avoid unnecessary admissions and additional tests and allows us to discharge a patient faster."

Top Performer by The Joint Commission

Boca Raton Regional Hospital has been named a Top Performer on Key Quality Measures® by The Joint Commission, the leading accreditor of healthcare organizations in the United States. Boca Regional was recognized for exemplary performance in using evidence-based clinical processes that have been shown to improve care for certain conditions.

Evidence-based medicine is the integration of individual clinical expertise with the best external clinical evidence drawn from systematic research.

Only one third of more than 1,000 hospitals surveyed earned the "Top Performer" distinction. Boca Regional was recognized for its achievements in the **treatment of heart attack, heart failure, pneumonia and surgical care**. The ratings are based on accountability measure data reported to The Joint Commission during 2012.

Hospitals named as "Top Performers" must achieve cumulative performance of 95 percent or above across a series of the established accountability measures. A 95 percent score means a hospital provided evidence-based practice 95 times out of 100 opportunities.

"We understand that what is of paramount importance to our patients is safe, effective care," said Charles Posternack, MD, Chief Medical Officer at Boca Raton Regional Hospital.

"We've made an institutional-wide commitment to accreditation and positive patient outcomes. We're extremely gratified to see our efforts – and our success – recognized in such a significant and meaningful way."





It's the Most Sophisticated

COMPUTER EVER DESIGNED

Its programming is estimated to contain 100 billion neurons and its wiring is made up of roughly one quadrillion – a million billion – synapses. It can reason. It can imagine. It is always changing and modifying itself. It contains no off button.

It is the human brain. And when it fails due to injury or disease, it requires a level of medicine that matches the sophistication of the body's neurological system if optimum function is to be restored. That level of care will be available to residents of South Florida and beyond as Boca Raton Regional Hospital opens its new [Marcus Neuroscience Institute](#) in the spring of this year.

» CONTINUED ON PG 12



T

he Institute was created out of a lead \$25 million grant from the Marcus Foundation and was initiated by Bernie Marcus, former CEO of The Home Depot, and his wife, Billi. Supported by other philanthropic gifts, the 56,000 square-foot facility will serve as a unique nexus of care for neurological and neurosurgical patients and will transform the landscape of clinical capabilities in the region.

The Institute will be led by Robert Levy, MD, PhD, who comes to Boca Regional after serving as Professor and Chairman of Neurological Surgery at the University of Florida College of Medicine in Jacksonville and Co-Director of the Shands-Jacksonville Neuroscience Institute.

A prolific researcher who has authored or co-authored three books and more than 200 peer-reviewed articles in such prestigious publications as *The New England Journal of Medicine* and *Annals of Neurology*, Dr. Levy also spent 24 years at the Northwestern School of Medicine where he was a tenured professor in three disciplines, Chief of the Section of Stereotactic and Functional Neurosurgery and Director of the school's Gamma Knife Center.

“We are creating a new paradigm of care for the neurological or neurosurgical patient...”

ROBERT LEVY, MD, PHD,
DIRECTOR OF MARCUS NEUROSCIENCE INSTITUTE



Robert Levy, MD, PhD, and Bernie Marcus

“From our technology, the caliber of our medical and support staff — even the way the building itself has been designed — everything is meant to optimize the effectiveness and efficiency of diagnosis and the treatment and support we provide,” said Dr. Levy.

Highlighting the technological components of the Institute are four dedicated operating rooms, each equipped with intra-operative MRI and CT scanners. This equipment provides real-time scans during all stages of a procedure, ensuring greater accuracy and patient safety.

Another distinctive feature of the Marcus Neuroscience Institute is its biplane angiography suite, a critically important component in the diagnosis and care of a host of neurological conditions. “With biplane, we can produce highly detailed, three-dimensional images from two regions of the head, from front-to-back and from side-to-side,” explained Dr. Levy. “This superior visualization greatly enhances our diagnostic and therapeutic capabilities and significantly reduces the time to complete a neurological angiogram.”

In addition to highly acclaimed clinicians in all facets of the neurosciences, the Institute’s staff will also include neurointensivists — physicians who are specially trained in neurocritical care. According to Dr. Levy, recent studies show that neurointensive care units utilizing this type of specialist see lower mortality rates, shorter lengths of stay and a decrease in discharges to nursing homes.

The latest data from the Centers for Medicare and Medicaid Services show that with an aging population one of the largest anticipated needs in healthcare will be in the neurosciences, including vascular disease of the brain, Alzheimer’s and other memory disorders, multiple sclerosis, epilepsy and brain tumors.

“The Institute will have specific and advanced programs designed to address each of these afflictions, all in one place and under one roof,” said Mr. Marcus. “Our goal in making our gift to Boca Regional was to meld the best in physician skill with the finest technology in a marvelous facility. This spring, our community will see that we accomplished just that.”

An Internationally Acclaimed Neurosurgeon to Lead the Marcus Neuroscience Institute

Robert Levy, MD, PhD

HONORS AND AWARDS

- Best Doctors in America
- Who’s Who in America
- Best Doctors in Chicago, *Chicago Magazine*
- Health Care Heroes Surgeon Award





EDUCATION

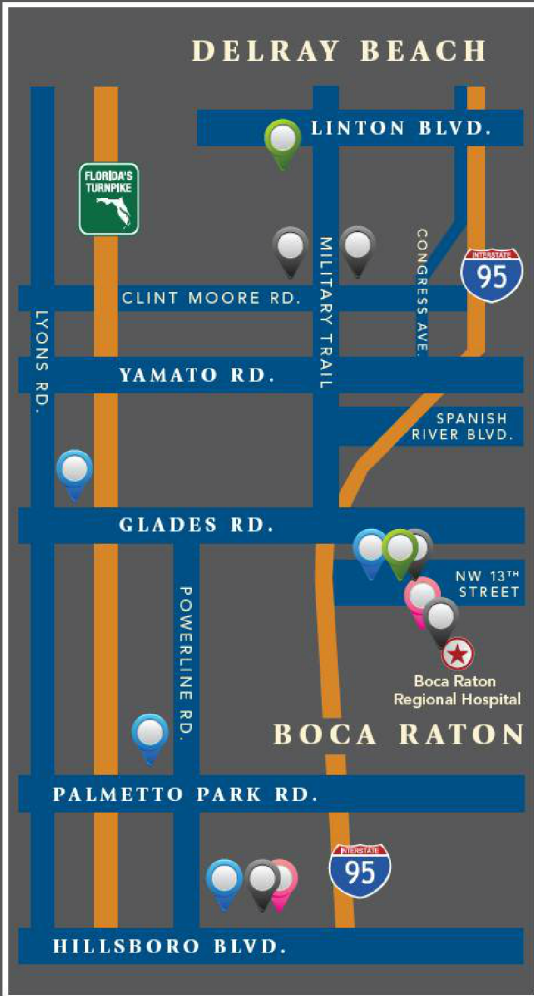
- Northwestern University, BA
- Northwestern University, MS
- Stanford University, PhD
- Stanford Medical School, MD
- Stanford University, *Postdoctoral Fellow*
- Stanford University Medical Center, *Intern, General Surgery*
- Stanford University Medical Center, *Resident, General Surgery*
- University of California, San Francisco *Resident, Department of Neurosurgery*
- San Francisco General Hospital, *Chief Resident, Neurological Surgery*
- University of California, San Francisco, *Chief Resident, Neurological Surgery*

ACADEMIC APPOINTMENTS

- University of Florida College of Medicine Jacksonville
Professor and Chairman
Department of Neurological Surgery
Co-Director
Shands-Jacksonville Neuroscience Institute
- Northwestern University Medical School
Professor
Department of Radiation Oncology
Professor with Tenure
Department of Neurological Surgery
Professor with Tenure
Department of Physiology
Professor with Tenure
Department of Radiation Oncology

COMMUNITY-BASED
BOCA REGIONAL SERVICES

-  BocaCare – Primary Care
-  Outpatient Imaging Services
-  The Center for Breast Care
-  Radiation Oncology



Orthopedic Institute

AT BOCA RATON REGIONAL HOSPITAL

Boca Raton Regional Hospital's Orthopedic Institute offers the most sophisticated and innovative care in a variety of sub-specialties including arthritis treatment, hip and knee replacement, spinal surgery, shoulder surgery and sports medicine. The dedicated team of physicians, nurses, physical therapists and other healthcare professionals is focused on improving the lives of patients by alleviating pain, promoting speedy recoveries and returning patients to a state of independence.

The Orthopedic Institute provides state-of-the-art total knee replacement and minimally invasive surgical techniques like anterior hip replacement, which provides patients with a faster recovery,

less pain and enhanced mobility. The Institute specializes in hip arthroscopy, a surgical procedure that gives doctors a clear view of the inside of a hip joint to better diagnose and treat hip problems.

Its advanced preoperative navigation system gives surgeons added precision in the operating room. Pain management protocols and a team approach to care are considered best practices in the field. All in an orthopedic unit that features private rooms with patient amenities such as flat screen TVs and WiFi.



For additional information
visit BRRH.com

Access to Premier Imaging Services

|  BOCA RATON REGIONAL HOSPITAL IMAGING SERVICES | Boca Raton Regional Hospital 800 Meadows Road Boca Raton | Boca Clinic 1601 Clint Moore Road Suite 140 Boca Raton | Clint Moore 1905 Clint Moore Road Suite 114 Boca Raton |
|--|---|--|--|
| CT | ✓ | ✓ | ✓ |
| 64-Slice CT | ✓ | ✓ | |
| 3T MRI | | | |
| Breast MRI / PEM | | | |
| MRI | ✓ | ✓ | ✓ |
| SPECT/CT | | | |
| Nuclear Medicine | ✓ | ✓ | |
| PET/CT Scan | | | |
| Ultrasound | ✓ | ✓ | ✓ |
| Digital X-ray | ✓ | ✓ | ✓ |
| Interventional Radiology | ✓ | | |
| Molecular Breast Imaging | | | |
| Digital Mammography | | | ✓ |
| Clinical Breast Exams | | | |
| Bone Densitometry | | | |
| Lab Services | ✓ | ✓ | ✓ |
| iSTAT | | ✓ | ✓ |
| Flash CT | ✓ | | |
| DaTscan™ | | | |

Christine E. Lynn Women's Health & Wellness Institute

OFFERS A FULL RANGE OF COMPREHENSIVE SERVICES

The Center for Breast Care

- Internationally renowned, fellowship-trained breast imaging radiologists
- Same-day imaging results
- State-of-the-art technology: digital mammography, breast ultrasound with ShearWave™ Elastography, breast magnetic resonance imaging (MRI), breast positron emission mammography (PEM) and bone mineral densitometry
- No prescription needed for screening mammograms over the age of 40
- ACR accredited as a Breast Imaging Center of Excellence
- Accredited by the National Accreditation Program for Breast Centers (NAPBC)

- Minimally invasive biopsy
- High-risk breast assessment / clinical breast exams
- Access to leading clinical imaging trials
- Genetic testing and counseling for high-risk patients

The Phyllis Sandler Center for Living Well

- Education
- Women's research

The Center for Women's Imaging

- X-ray, ultrasound and MRI
- Bone mineral densitometry

The Jean & David Blechman Center for Women's Specialty Care and Preventive Cardiology

- Women's primary and specialty care

- Women's preventive cardiology
- Weight management program
- Annual exams, wellness coaching and navigation services
- Screening programs
- Bone health

The Center for Pelvic Health

- Screening, clinical assessment and diagnostic testing
- Surgical and non-surgical treatment
- Minimally invasive surgical treatment options with the use of the da Vinci® robotic surgery system
- Rehabilitation therapy

For additional information on the services offered at the Lynn Women's Institute call 561.955.4HER (561.955.4437)



FOR ADDITIONAL INFORMATION, CALL 561.955.4169. TO SCHEDULE AN EXAM, CALL 561.955.4700.

| Hillsboro 1981 W. Hillsboro Blvd. Deerfield Beach | Lynn Cancer Institute Sandler Pavilion 701 NW 13th Street Boca Raton | The Center for Breast Care Deerfield 1979 W. Hillsboro Blvd. Deerfield Beach | Lynn Women's Health & Wellness Institute The Center for Breast Care 690 Meadows Road Boca Raton | The Center for Breast Care Fort Lauderdale 790 E. Broward Blvd., Suite 302 Fort Lauderdale |
|---|---|---|--|---|
| ✓ | ✓ | | | |
| | ✓ | | | |
| ✓ | | | ✓ | |
| | ✓ | | ✓ | |
| | ✓ | | | |
| ✓ | ✓ | ✓ | ✓ | ✓ |
| ✓ | ✓ | | | |
| | | | ✓ | ✓ |
| | | ✓ | ✓ | ✓ |
| | | ✓ | ✓ | ✓ |
| | | ✓ | ✓ | ✓ |
| ✓ | ✓ | | ✓ | |
| | ✓ | | | |



BocaCareSM, Boca Regional's primary care physician network, is dedicated to providing you with exceptional medical treatment in a truly patient-centered environment. Our approach to your care focuses on three key components: time, touch, team.

TIME. Not only do we have same-day appointments and in-office labs, X-rays, bone density and ultrasound, but we also feature fast-track "Quick-Care" service for patients with less severe illnesses that can be readily diagnosed and treated during office visits.

TOUCH. Greeting areas instead of sliding glass partitions. You will always be referred to by name, not as "the patient in room three." We believe caring for you means showing you we really do.

TEAM. Our unique team approach and interoffice communication system minimizes wait time in rooms and maximizes time with nurses and physicians. No gaps. No waiting. Just a seamless transition of caregivers during your visit. It's what makes BocaCare distinctive.

Conveniently located in four locations.



BocaCareSM – East

1001 NW 13TH STREET, SUITE 201
BOCA RATON, FL 33486
561.955.6420

- Same-day appointments
- In-office lab and X-ray
- Preoperative clearance
- Immunizations
- Wellness and preventive medicine
- Hospital admission / follow-up
- STD health services and testing
- "Quick Care" service
- In-office bone density and ultrasound
- Hormone replacement therapy
- Weight loss program



Carlos Ballestas, MD



Basil Chie-For, MD



Carolyn Kubiak, DO



Gladys Martinez, DO



Stanley Weiner, MD

BocaCareSM – Del Mar

7301A WEST PALMETTO PARK ROAD,
SUITE #100B, BOCA RATON, FL 33433
561.955.6500

- Same-day appointments
- In-office lab and X-ray
- Preoperative clearance
- Immunizations
- Wellness and preventive medicine
- Hospital admission / follow-up
- STD health services and testing
- Chronic disease management



Fernanda de Oliveira, MD

BocaCareSM – Somerset

8903 GLADES ROAD, SUITE K-1A
BOCA RATON, FL 33434
561.955.6440

- Same-day appointments
- In-office lab and X-ray
- Preoperative clearance
- Immunizations
- Wellness and preventive medicine
- Hospital admission / follow-up
- STD health services and testing
- Cardiovascular screening
- Mental health



Lauresha Hysa, MD

BocaCareSM – Hillsboro

3467 W. HILLSBORO BOULEVARD, SUITE A
DEERFIELD BEACH, FL 33442
954.420.0886

- Same-day appointments
- In-office labs
- Preoperative clearance
- Immunizations
- Wellness and preventive medicine
- Hospital admission / follow-up
- STD health services and testing
- "Quick Care" service
- House calls
- Skilled nursing / rehab admission and follow-up



Alan Saitowitz, MD



Ignacio Valdes, MD

MR



BOCA RATON
REGIONAL HOSPITAL
PHYSICIAN NETWORK

SPECIALTY CARE

BocaCareSM – Specialty Care is comprised of only the highest qualified physician specialists in their fields. The physicians support the Hospital's Centers of Excellence, along with other key areas of medicine important to our patient population.



JAMES R. BARRON, MD, FACS

Colorectal Surgery,
Minimally Invasive Surgery
561.395.2626



JOSEPH A. COLLETTA, MD, FACS

Breast Surgery
561.395.2626



AVRAHAM BELIZON, MD

Colorectal Surgery,
Minimally Invasive Surgery
561.395.2626



S. FORREST DODSON, MD

Hepatobiliary Surgery, Pancreatic Surgery
561.395.2626



Effective: April 1, 2014

CURTIS N. BERNSELY, MD, FACS

Urological Surgery
561.395.3900



MATTHEW A. KLEIN, MD, FACS

General and Vein Surgery
561.395.2626



LUIS F. CHAVARRIAGA, MD

Vascular Surgery
561.395.2626



W. ANTHONY LEE, MD, FACS

Director of Endovascular Program at
Christine E. Lynn Heart & Vascular Institute,
Vascular and Endovascular Surgery
561.395.2626



ROBERT M. LEVY, MD, PhD
 Director of Marcus Neuroscience Institute,
 Neurological Surgery
 561.955.4104



ANDREW S. ROSS, MD, FACS, FASCRS
 Colorectal Surgery,
 Minimally Invasive Surgery
 561.395.2626



FREDERICK B. LIEBLER, MD, FACS
 Thoracic Surgery
 561.395.2626



STEPHEN STEINBERG, MD, FACP, FACC
 Medical Director of Pancreas & Biliary Center,
 Gastroenterology
 561.955.6631



Effective: April 1, 2014
JEFFREY I. MILLER, MD, FACS
 Urological Surgery
 561.394.4500



JONATHAN WAXMAN, MD, FACS, FCCP
 Medical Director of Thoracic Surgery
 561.395.2626



ROBYN M. MONCRIEF, MD, FACS
 Breast Surgery
 561.395.2626



JOSE F. YEGUEZ, MD
 Colorectal Surgery,
 Minimally Invasive Surgery
 561.395.2626



JOHN C. MOTTA, MD, FACS
 Vascular Surgery
 561.395.2626



MAKING ROUNDS

is produced by the Marketing Department
of Boca Raton Regional Hospital.

- Jerry J. Fedele | President and CEO
- Thomas Chakurda | Vice President of Marketing
- Kristen Cruz | Communications Specialist
- Cinde Logan | Marketing Assistant
- Nancy Mae Morales | Graphic Designer
- Nidhi Patel | Call Center Specialist
- Nichole Vaux | Graphic Designer

 LIKE US  @BOCAREGIONAL

TO:



Boca Regional to Introduce Web-Based Patient Portal

FOR EASY AND SECURE ELECTRONIC ACCESS TO IMPORTANT CLINICAL INFORMATION

In April, patients of Boca Raton Regional Hospital, BocaCareSM and The Center for Hematology-Oncology will have a convenient, easily accessible and secure way to electronically access a host of personal medical data. Patient Connect, a portal located on the Boca Regional website, will provide an entry point for patients to review their medical visits or treatment, see summaries of inpatient stays and monitor lab and radiology reports.

"We feel that this new resource will help us engage our patients in a meaningful way and provide them with a valuable resource in managing their particular healthcare needs or situation," said Robin Hildwein, Chief Information Officer and Executive Director of Information Services at Boca Raton Regional Hospital. "By offering information in this fashion, we strengthen the partnership that is so vital to a productive patient-provider relationship."

Another important component of Patient Connect is that it allows for a patient to designate a caregiver, such as a husband or wife, to also have access

to the individual's available medical information. A recent national study revealed that 29 percent of adults in the United States are considered caregivers for another person and 31 percent of all households has a caregiver.

Given these data, a technology like Patient Connect can serve as a vital resource for these individuals and ease such burdens as tracking and maintaining discharge instructions or being appraised of test reports.

"Patient Connect is not only a wonderful tool for an individual patient, but also for someone who plays an integral role in that person's care," said Hildwein.

The patient portal at Boca Regional is part of a process termed Health Information Exchange (HIE), whereby electronic healthcare data are transferred from one source to another, allowing providers and patients to securely view vital medical information. As part of a law passed by Congress

in 2009, hospitals were incentivized to adopt and use technology, such as electronic health records, that have shown to prevent hospital readmissions, reduce medication errors and decrease duplicate testing. The patient portal component of HIE is Boca Regional's response to the Government's mandate that hospitals be even more rigorous in the exchange of healthcare information.

"We urge patients to take advantage of Patient Connect," said Hildwein. "We are confident they will find it to be a most responsive and reliable source of information for them."

