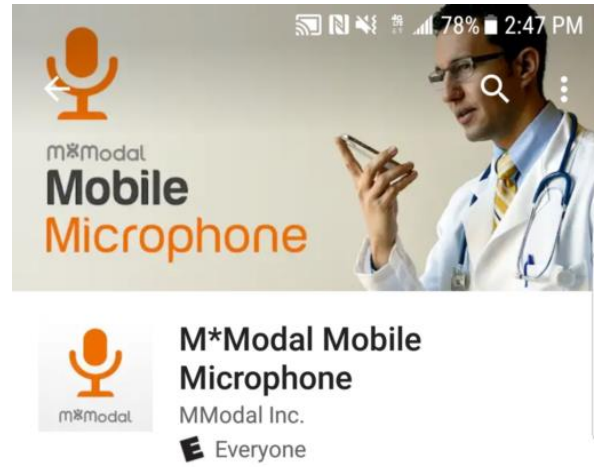


Mobile Microphone

The M*Modal **Fluency Direct™** Mobile Microphone is a mobile application that allows clinicians to dictate using the M*Modal Fluency Direct Desktop Application without the need for a physical microphone attached to the PC. Once the mobile application is paired one time with a M*Modal Fluency Direct User ID, the user of the application can dictate using M*Modal Fluency Direct running on any physical desktop or virtual device without a need for docking, Bluetooth or physical connections. The Application uses secure data transmission to stream audio from the mobile device directly to M*Modal Fluency Direct running elsewhere. It builds on the same cloud-based M*Modal Speech Understanding™ technology powering all M*Modal solutions, so existing clinician voice profiles can be used easily and instantly for optimal accuracy.

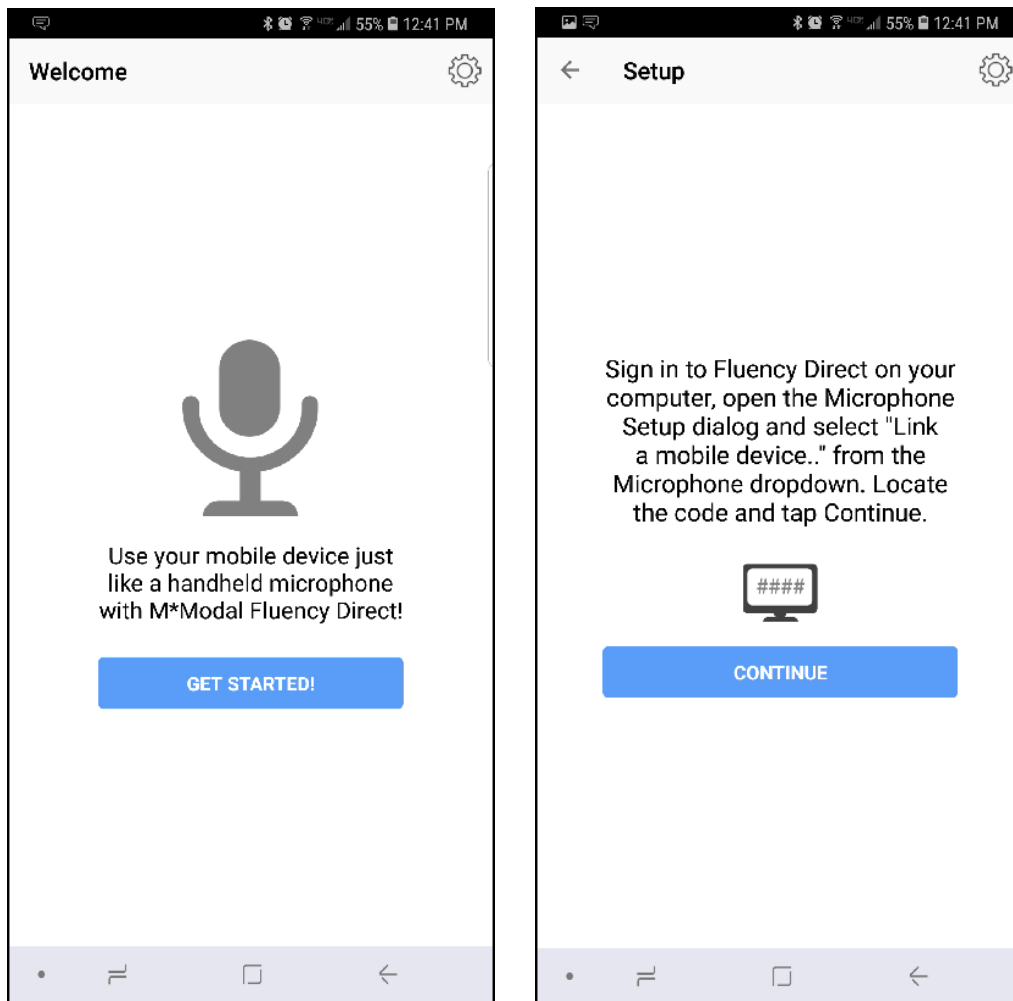
Requirements

- Fluency Direct 9.1 or higher. BRRH uses 10.0
- Requires iOS 9.0 or newer
- Android 4.4 or newer
- M*Modal Mobile Microphone app installed from the App/Play Store

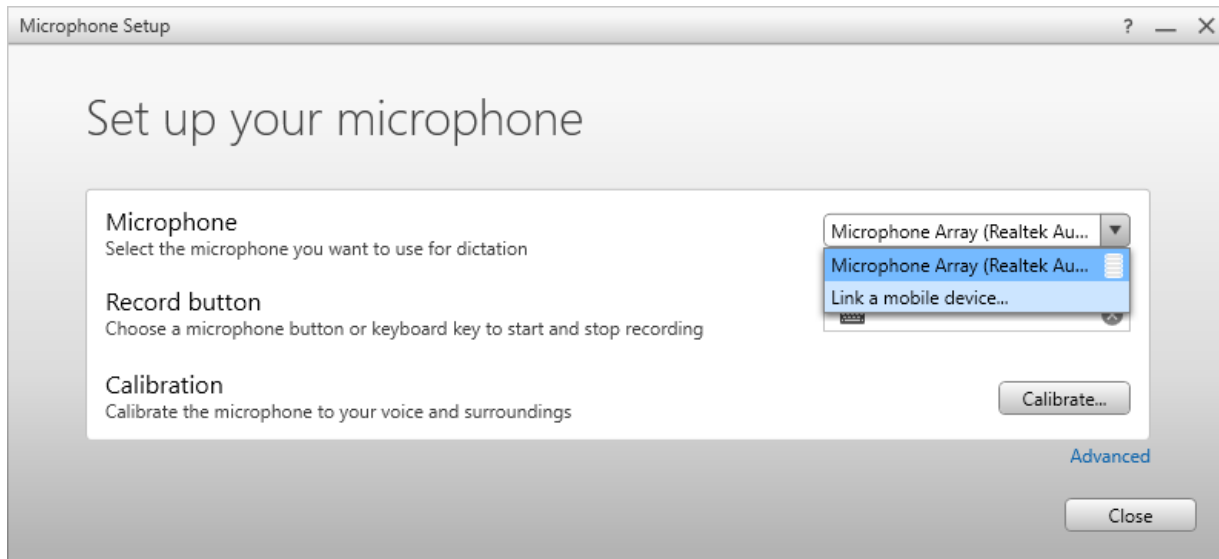


Linking a User ID

After you have installed and opened the M*Modal Mobile Microphone, you will see the Welcome screen. Click the Get Started link to begin. You will be prompted to sign into Fluency Direct on your desktop or laptop computer to connect the microphone.



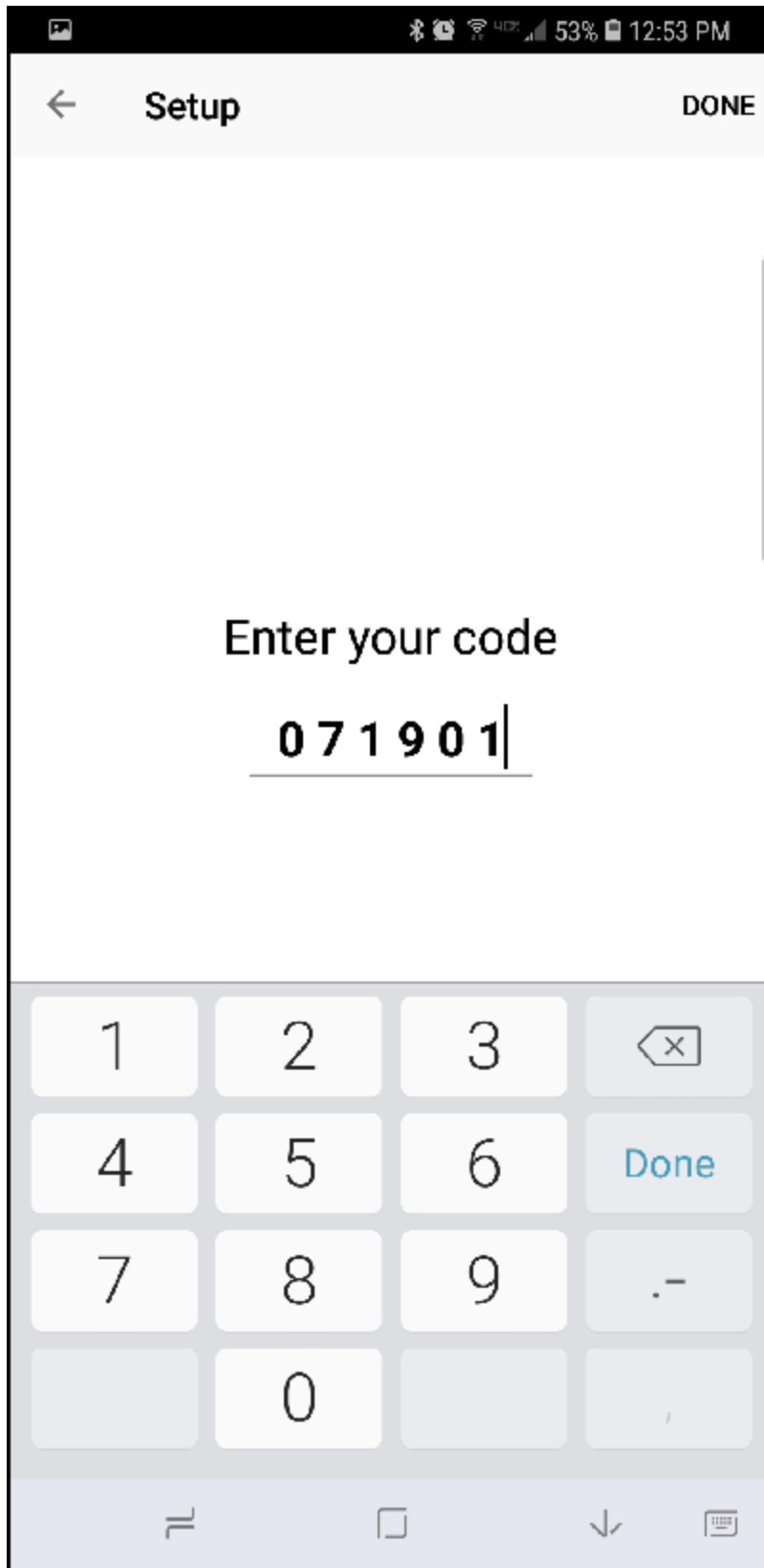
From Fluency Direct, select Microphone Setup from the Control Bar drop down menu. From here select "Link a mobile device..." from the Microphone drop down menu.



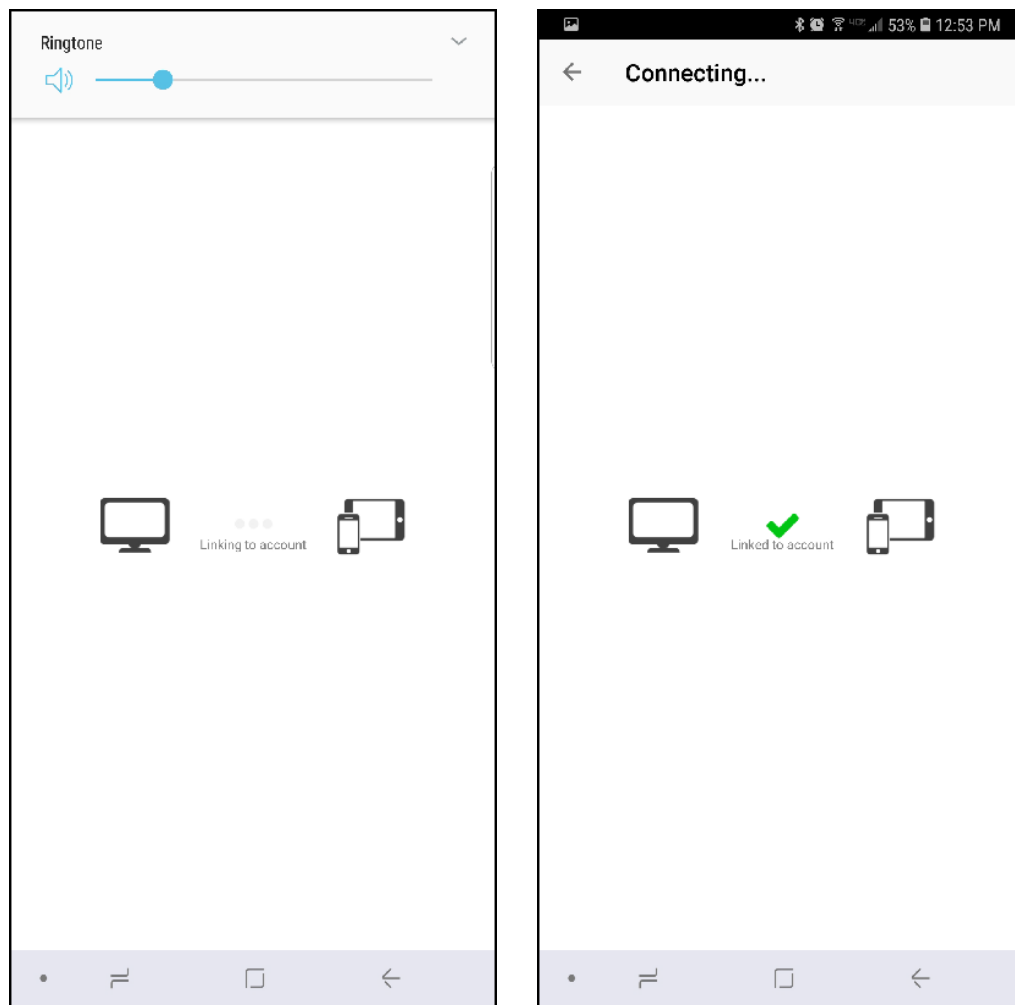
Fluency Direct will present you with a 6-digit code. The entry of a code is a one-time linking process between your Fluency Direct User ID and your phone. Any time you load or switch to the Mobile Microphone on your mobile device, the Mobile Microphone will be treated as a microphone source for the last instance of Fluency Direct logged into with your User ID. Fluency Direct will treat a switch to the Mobile Microphone as a new microphone being plugged into the computer. Fluency Direct will treat a switch away from the Mobile Microphone as a microphone being unplugged from the computer.



Access the M*Modal Mobile Microphone from your mobile device and enter the 6-digit PIN.



Fluency Direct will connect with your mobile device.



Multiple Devices

If you have more than one smartphone, or perhaps a phone and a tablet, it is possible to link multiple devices (multiple "mobile microphones" via the M*Modal Mobile Mic app) to one Fluency Direct user.

The mobile device can only be linked to one Fluency Direct user at a time though. See more on how to [Unlink a Fluency Direct user\[unlinking-a-user-id.html\]](#) from the app.